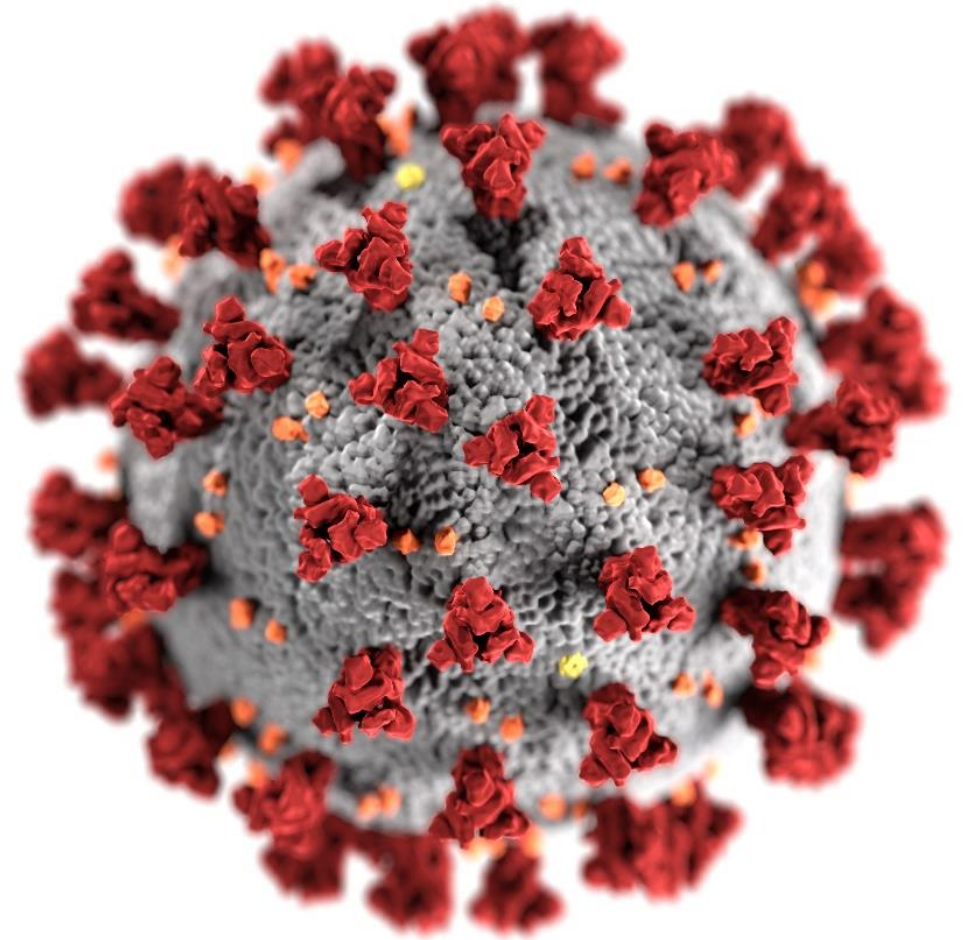


# Latest Updates from CDC's COVID-19 Vaccine Task Force

Evelyn Twentyman, MD MPH  
ACL Aging and Disability Stakeholder Call  
January 21<sup>st</sup>, 2022



[cdc.gov/coronavirus](https://cdc.gov/coronavirus)

# Key Recommendations from Interim Clinical Considerations


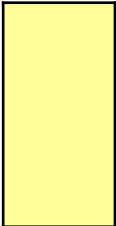
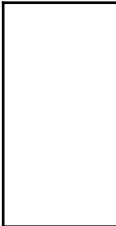


# General Recommendations

- COVID-19 primary series vaccination is recommended for **everyone ages 5 years and older** in the United States for the prevention of COVID-19
  - This includes people with **underlying medical conditions**, and people with & without **disabilities**
  - People with **moderate or severe immunocompromise** have additional considerations and need **more** doses than most people
- In most situations, **Pfizer-BioNTech or Moderna** COVID-19 vaccines are preferred over the Janssen COVID-19 Vaccine for primary and booster vaccination.



# Recommended COVID-19 Vaccines by Age Group

 All people (including people who are moderately or severely immunocompromised)
  People who are moderately or severely immunocompromised
  Not recommended

Recipient Age	Product	Primary Series	Additional Primary Dose	Booster Dose
5–11 years	<i>Pfizer-BioNTech</i> <i>Orange cap</i>	2 doses separated by 21 days	28 days after primary series dose 2	Not recommended
12–17 years	<i>Pfizer-BioNTech</i> <i>Purple cap or gray cap</i>	2 doses separated by 21 days	28 days after primary series dose 2	5 months after previous dose
18 years and older	<i>Pfizer-BioNTech</i> <i>Purple cap or gray cap</i>	2 doses separated by 21 days	28 days after primary series dose 2	5 months after previous dose
	<i>Moderna</i>	2 doses separated by 28 days	28 days after primary series dose 2	5 months after previous dose
	<i>Janssen</i>	1 dose	Not recommended	2 months after previous dose

# People with Moderate or Severe Immune Compromise

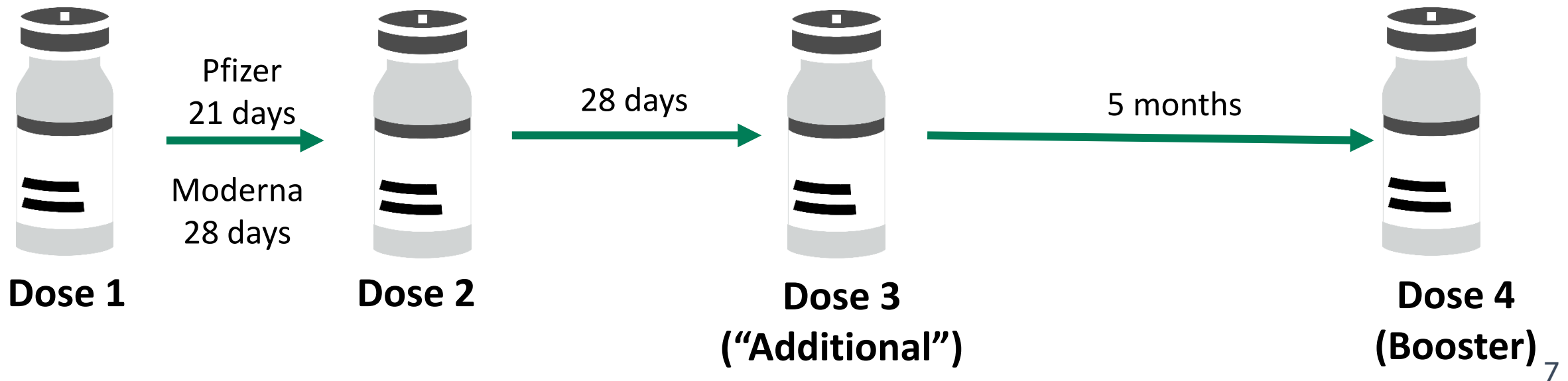
- People with immunocompromising conditions or people who take immunosuppressive medications or therapies are **at increased risk for severe COVID-19**.
- People with immunocompromising conditions **may not mount a protective immune response** after initial vaccination and protection may **wane over time**.
- COVID-19 vaccines are not live vaccines and therefore can be **safely administered** to immunocompromised people.

# People with Moderate or Severe Immune Compromise

- Active treatment for solid tumor and hematologic malignancies
- Receipt of solid-organ transplant and taking immunosuppressive therapy
- Receipt of CAR-T-cell or hematopoietic stem cell transplant (within 2 years of transplantation or taking immunosuppression therapy)
- Moderate or severe primary immunodeficiency (e.g., DiGeorge, Wiskott-Aldrich syndromes)
- Advanced or untreated HIV infection
- Active treatment with high-dose corticosteroids (i.e.,  $\geq 20$ mg prednisone or equivalent per day), alkylating agents, antimetabolites, transplant-related immunosuppressive drugs, cancer chemotherapeutic agents classified as severely immunosuppressive, TNF blockers, and other biologic agents that are immunosuppressive or immunomodulatory

# mRNA COVID-19 Vaccines for People with Moderate or Severe Immunocompromise Aged 12 Years and Older

- People with moderate or severe immune compromise **at the time of primary vaccination** should receive a **total of 4 mRNA COVID-19 vaccine doses**:
  - 2-dose mRNA COVID-19 Vaccine primary series (preferred over 1 dose Janssen COVID-19 Vaccine)
  - 1 additional primary dose (i.e. third dose) of the **same** mRNA COVID-19 vaccine
  - 1 booster dose



# Stem Cell Transplant (HCT) and CAR-T-cell recipients

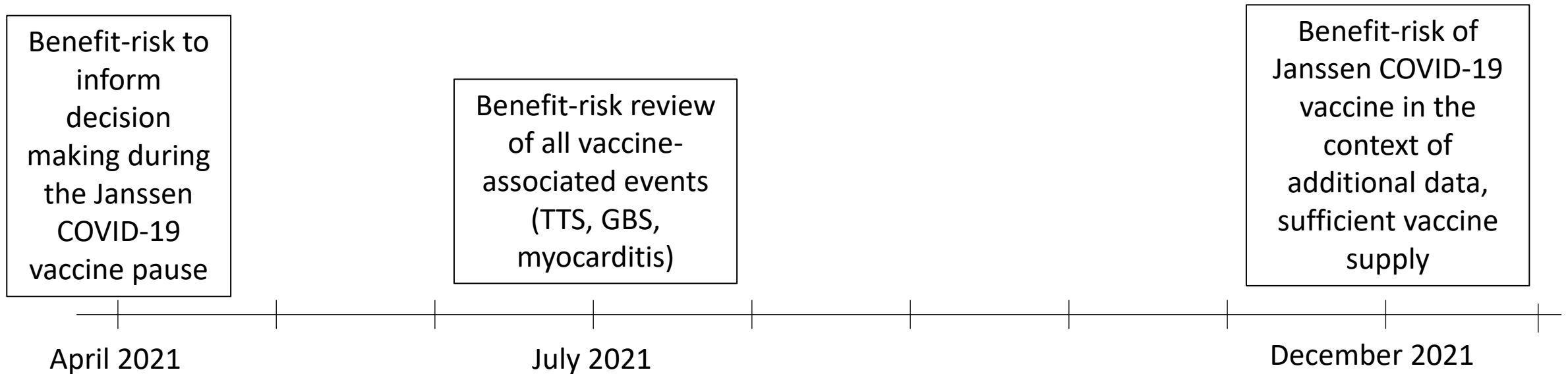
- HCT and CAR-T-cell recipients who received doses of COVID-19 vaccine **prior to or during treatment** with an HCT or CAR-T-cell therapy should be **revaccinated with a primary vaccine series**
  - Preferably with **an mRNA vaccine (3 doses)** regardless of vaccine issued for initial primary vaccination)
  - At least **3 months (12 weeks)** after transplant or CAR-T-cell therapy



# Latest Updates to Interim Clinical Considerations



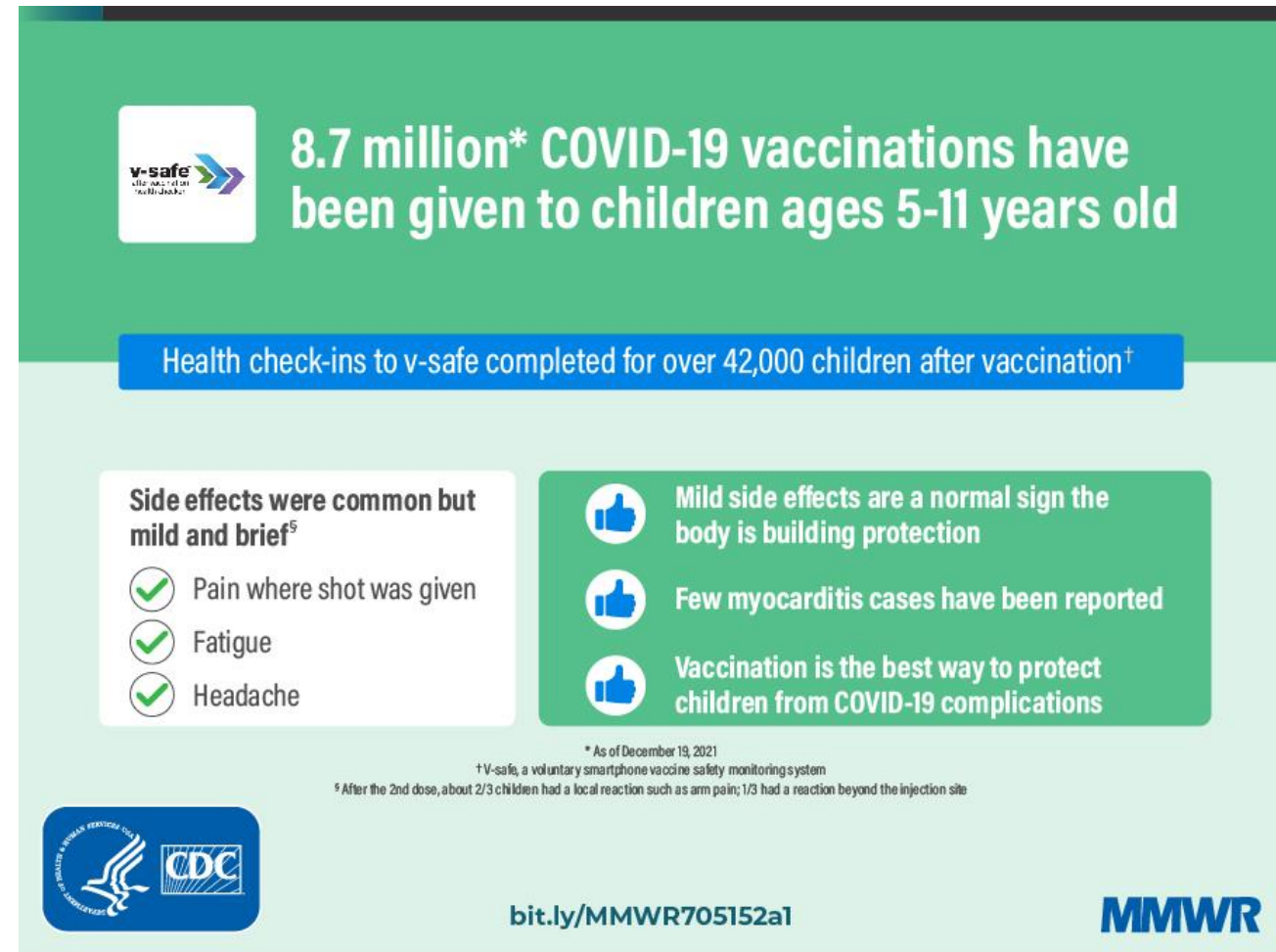
# Preferential recommendation for mRNA vaccines



- Additional case review and ongoing safety surveillance identified cases (previous and newly occurring) of TTS, including deaths
- No longer in the setting of limited mRNA COVID-19 vaccine supply in the US
- ACIP December 16 Vote: mRNA COVID-19 vaccines are **preferred** over the Janssen COVID-19 vaccine for the prevention of COVID-19 for those aged  $\geq 18$  years

# Additional dose for children 5–11 years with immunocompromise should receive an additional Pfizer-BioNTech primary series dose

- Vaccine effectiveness is lower among patients with immunocompromise<sup>1</sup>
- CDC recommends an additional primary series mRNA vaccine dose in people with immunocompromise aged  $\geq 12$  years<sup>2</sup>
- Approximately 1.4 million children ages 5-17 have an immunocompromising condition<sup>3</sup>
- Safety findings from VAERS and v-safe during administration of >8 million doses of Pfizer-BioNTech: rare reporting of any serious side effects<sup>4</sup>



# Latest Updates to Mask Recommendations



# CDC mask recommendations

- CDC recommends a layered approach to help slow the spread of COVID-19
- Masks are a critical part of the layered approach
  - Wear a mask with the best fit, protection, and comfort for you
  - In areas of substantial or high community transmission, wear a well-fitting mask indoors in public, regardless of your vaccination status
- Any mask is better than no mask
  - Take steps to [improve how your mask protects you](#)

# Choosing a mask or respirator

- Masks and respirators are effective at reducing spread of COVID-19, when worn consistently and correctly
  - Some masks and respirators offer more protection than others
  - Some may be harder to wear consistently than others
- Wear a well-fitted mask or respirator correctly that is comfortable for you and that provides good protection
- Get the latest information about [masks and respirators](https://www.cdc.gov/coronavirus/2019-nCoV/masks-respirators) at CDC's website

**Wear a mask with the best fit, protection, and comfort for you.**

 <b>N95 Respirator</b> NIOSH-approved	 <b>KN95 Respirator</b>	 <b>Disposable Mask</b> Sometimes referred to as "surgical masks" or "medical procedure masks"	 <b>Cloth Mask</b> Non-medical, made of fabric
When worn correctly, respirators offer the highest level of protection and filter 95% of particles.	Filtration varies depending on standard. When worn correctly, KN95s provide more protection than disposable masks.	Disposable masks offer more protection than cloth masks.	Layered finely woven cloth masks offer more protection. Loosely woven cloth masks provide the least protection.

 Masks and respirators should not be worn by children younger than 2 years old.

[cdc.gov/coronavirus](https://www.cdc.gov/coronavirus)

326947-P

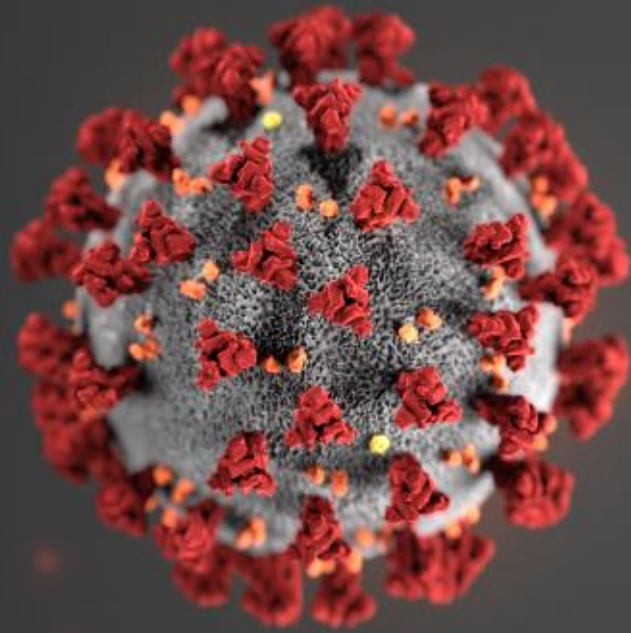
# Alternative Masks for Special Situations

Clear masks or cloth masks with a clear plastic panel are an alternative type of mask that may be helpful when interacting with certain groups of people, such as:

- People who are deaf or hard of hearing
- Young children or students learning to read
- Students learning a new language
- People with disabilities
- People who need to see the proper shape of the mouth for making appropriate vowel sounds



The FDA cleared for marketing a transparent medical mask. These transparent medical masks should be reserved for use by healthcare workers and patients who require them.



For more information, contact CDC  
1-800-CDC-INFO (232-4636)  
TTY: 1-888-232-6348 [www.cdc.gov](http://www.cdc.gov)

# Thank you

The findings and conclusions in this report are those of the authors and do not necessarily represent the official position of the Centers for Disease Control and Prevention.

